



WESTGATE STREET
CITY CENTRE





WESTGATE STREET

CITY CENTRE, CF10 1DN - £1,500 PCM



2 bedroom(s)



1 bathroom(s)



991.00 sq ft

The once private residence of the fifth Marquess of Bute. Find yourself living in Cardiff City Centre's oldest residential development whilst being situated on the very edge of Europe's youngest Capital City - a true fusion between the modern and the characterful. Castle Court, Westgate Street was built circa 1908 and is a development of stunning apartments full of charm, character and space - all whilst being in the heart of our proud Welsh Capital City.

This TOP-FLOOR, two bedroom apartment comes equipped with private balcony with Castle views. The lounge / dining area has been extended to make a fantastic living space of 8.5m x 5m (approx) which is large enough to easily cater for seating and dining area. Both bedrooms are a good sized double, complete with handsome parquet flooring feature and excellent lighting due to the property being located on the corner of the building and the smaller bedroom offers access to the private balcony. A modern kitchen with gas hob, integrated appliances and small pantry complete the internal condition of the apartment and it is completed by a shower room. A beautiful apartment. Gas Central Heating. Floor plan available

COUNCIL TAX BAND of E
EPC RATING of E

A holding fee of one weeks' rent will be payable to secure the dwelling. This will be deducted from the final balance payable upon moving into the dwelling, subject to a successful application. Jeffrey Ross Limited reserves the right to retain this payment should the applicant have provided false or misleading information at the time of applying for the dwelling or failed to take reasonable steps to enter into the Standard Occupation Contract.

PROPERTY SPECIALIST


Sheida Mohammadi
sheida@jeffreypass.co.uk

Property Management Co-ordinator





Energy Efficiency Rating

	Current	Potential
Very energy efficient - lower running costs		
(92 plus) A		
(81-91) B		
(69-80) C	70	74
(55-68) D		
(39-54) E		
(21-38) F		
(1-20) G		
Not energy efficient - higher running costs		
England & Wales	EU Directive 2002/91/EC 	





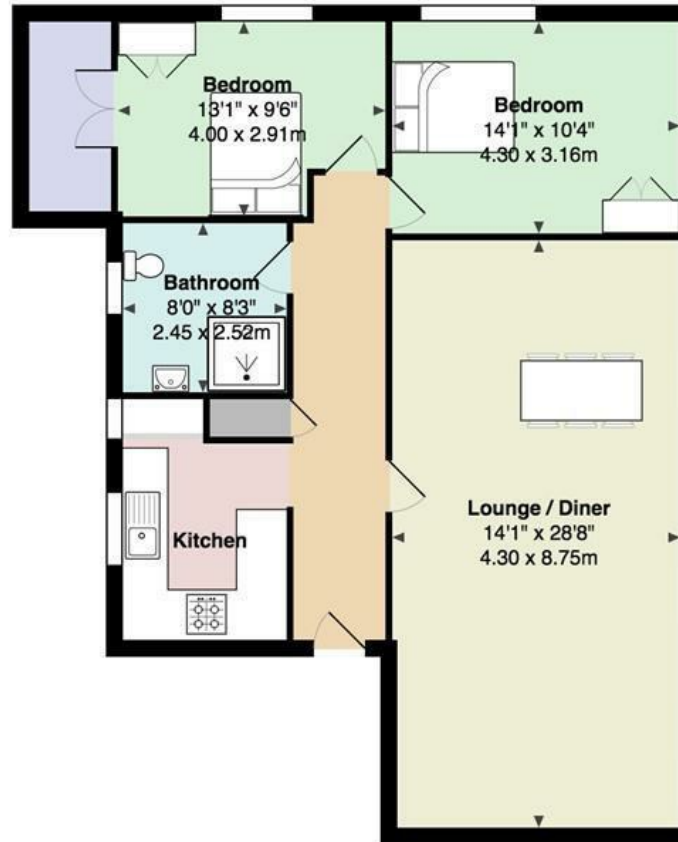


”

”

Comments by Sheida Mohammadi

Raglan House, City Centre



Total Area: 991 ft² ... 92.1 m²

All measurements are approximate and for display purposes only

www.jeffreyross.co.uk

Jeffrey Ross